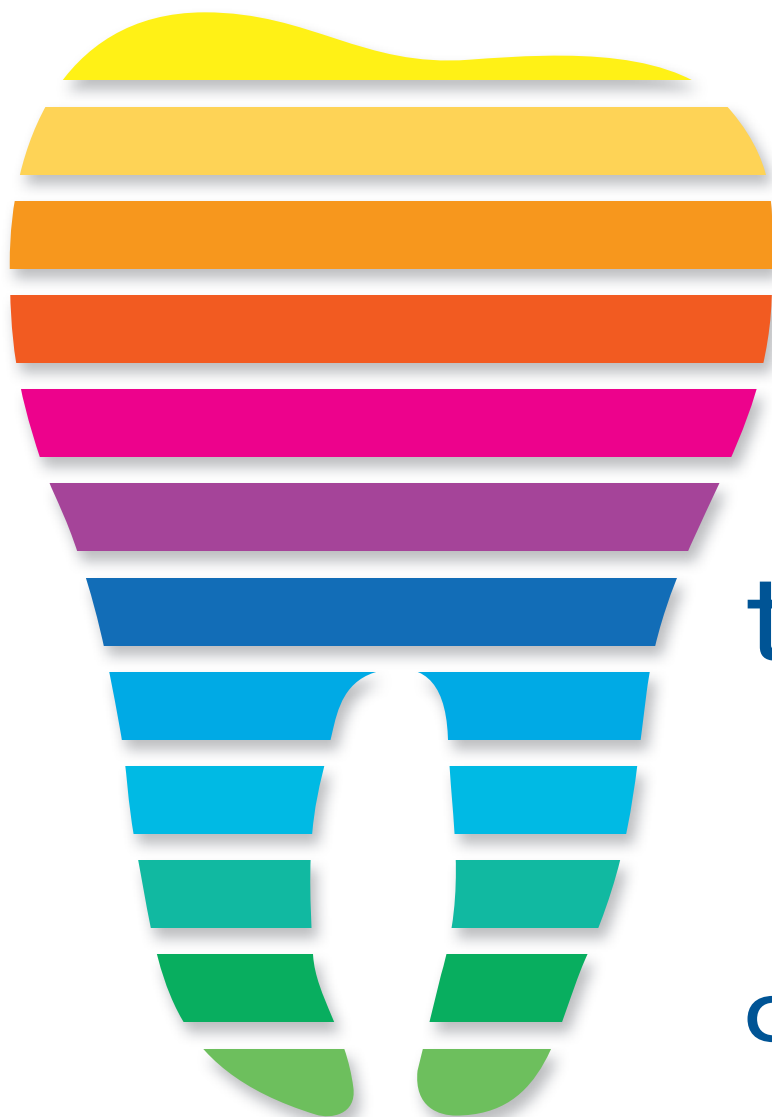




SWISS  
QUALITY

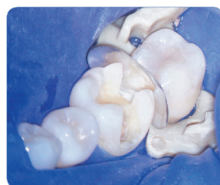


... choose  
**the Best**  
for yourself!

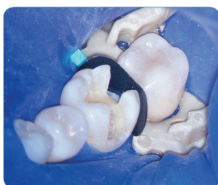
Our new products

**POLYDENTIA** SA  
 *Swiss Products for Fine Dentistry*





Without LumiContrast



With LumiContrast

## LumiContrast

Item REF 6700

High contrast sectional matrix system



- Mat, blue matrix surface for low reflection and no blinding effect
- High contrast between dark color/white teeth for precise identification of working area
- High-Tec matrix coloration method; colour cannot be scratched away with handling;
- No color-coating: no particles scattered into the filling material or cavity,
- Premium steel quality, doesn't collapse into the cavity, no deformation by wedges

*"I have been using the "LumiContrast" matrix system for several months. It is composed of molar and premolar sectional matrices and dark-colored rings. Thanks to the great reduction in reflection and to the considerable increase in contrast, my daily work under the microscope is far easier and my eyes are protected from unnecessary stress."*

Dr. Med. Dent. Luca Merlini - Locarno, Switzerland

Content: 120 sectional matrices (different sizes and shapes), 3 dark rings, 6 silicone tubes for rings



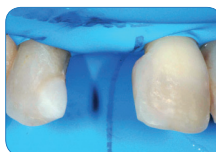
## Fiber-Splint ML Mini Starter Kit

Item REF 5976

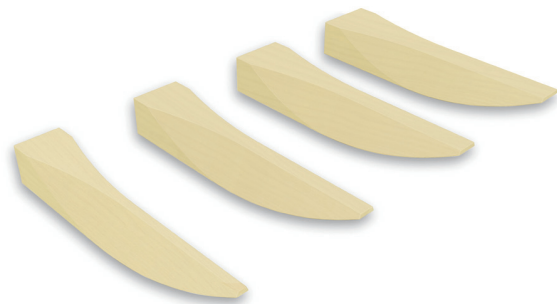
For perfectly positioned temporary splints after an extraction!



- For extremely thin and strong temporary splints
- Ideal after a tooth extraction
- With transparent silicon-key for a perfect repositioning
- Including Fiber-Bond with reduced viscosity for an optimized impregnation of the fiberglass strip
- For precise and aesthetic splints



Content: 50 cm Fiber-Splint ML 4 mm, 1 cartridge Fiber-Plast 48 ml + 6 mixing tips, 1 bottle Fiber-Bond 3 ml



## Macro-Wedges

### Item REF 5030

The large wedge for extremely deep cavities



- Developed with dentists
- Special wood wedges for extremely deep cavities or in general for very large interdental spaces
- Sealing effect due to wood swelling
- Helps to control gingival bleeding, impregnated with aluminium potassium sulphate
- 4 sizes (width), length unchanged

“Forget problems when trying to get perfect contact points in case of large interdental spaces! Finally, and only with Polydentia Macro-Wedges, it will be easy to achieve a good contact point even for very deep molar caries or in case of periodontal lesions. Hard times during matrix positioning are over!”

Dr. Chris Hasler – Thun, Switzerland

Content: 105 Macro-Wedges assorted  
(2.8 mm, 3.2 mm, 3.6 mm and 4.0 mm)



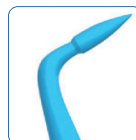
## Blue PolyShapes

### Item REF 5960

Transparent instruments for composite shaping



- For optimal light reflection
- Blue color for chromatic contrast
- Lightweight and ergonomic, avoid hand fatigue
- Composites do not stick to Blue PolyShapes



Instrument 1

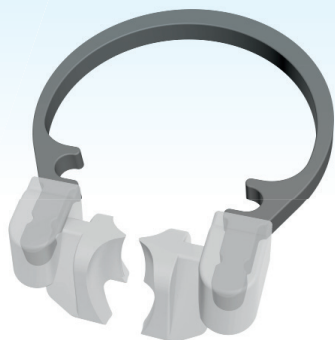


Instrument 2



Content: 2 Transparent Dental Instruments





## Polydentia MyRing

### Item REF 6301

Save money: keep the ring and replace just the rubber parts



- Ring for sectional matrices
- Exchangeable, autoclavable rubber ends
- Long ring life, just replace the rubber ends when necessary
- Optimized anatomy of the rubber ends, optimized grip
- Optimal relationship between longevity/quality/price

Content: 2 MyRings, 4 autoclavable rubber ends



## Polydentia MyClip

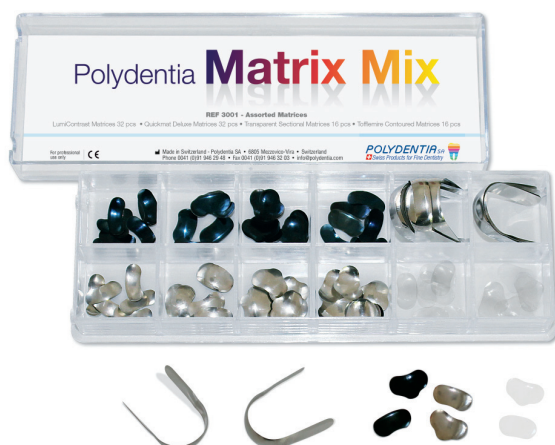
### Item REF 6302

Save time, forceps and ring all in one device



- Combination of forceps with a ring, for sectional matrices
- Adapted separation force
- Saves chair time
- Exchangeable, autoclavable rubber ends
- Optimized anatomy of the rubber ends, optimized grip
- Optimal relationship between longevity/quality/price

Content: 2 MyClips, 4 autoclavable rubber ends



## Polydentia Matrix Mix

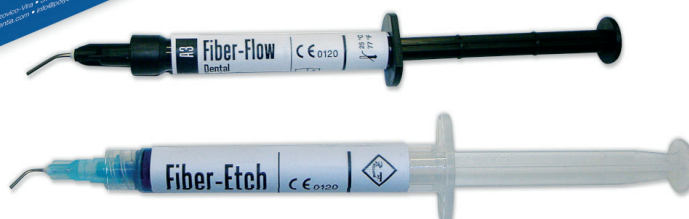
### Item REF 3001

The unique matrix test-kit



- LumiContrast: the high-contrast, dark sectional matrix for innovative dentistry
- Quickmat Deluxe: the sectional matrix for an easier daily practice
- Contoured Tofflemire-Matrix: for molars and premolars
- Transparent Sectional Matrix: for an optimized polymerization

Content: 32 LumiContrast Matrices, 32 Quickmat Deluxe Matrices, 16 Transparent Sectional Matrices, 16 Tofflemire Contoured Matrices



## Polydentia Splinting Set

### Item REF 5990

Your one-stop solution for dental splinting

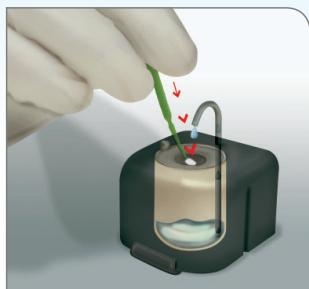
- Clinically tested and complete system for extremely strong dental splints
- Material saving packaging (bottles) for the fiberglass strip/Resealable bottle
- Pre-impregnated fiberglass strips, Fiber-Bond bottle in addition for special applications
- Optimal interdental positioning of the fiberglass strip thanks to the application clips "Clip&Splint" (autoclavable)
- Versatile clinical indications, 2 sizes of fiberglass strips (2 mm and 4 mm)
- All components can be reordered separately



Images by courtesy of Dr. L. Sigrist, Switzerland

Content: 1 bottle F-Splint-Aid (4 mm wide, 120 mm long, pre-impregnated with Fiber-Bond), 1 bottle F-Splint-Aid Slim (2 mm wide, 120 mm long, pre-impregnated with Fiber-Bond), 1 bottle Fiber-Bond 3 ml, 10 Clip&Splint - autoclavable fixation clips, 1 syringe Fiber-Etch 3.0 g, 1 syringe Fiber-Flow A3 2.0 g

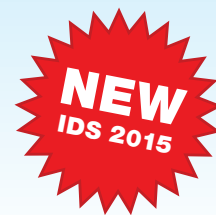




## Hy-Drop Forte

Item REF 5412

The chemical resistant liquid dispenser!



- Elegant black version
- Functional, chemical resistant, smart
- Autoclavable, thermodisinfectable
- Single-handed operation

Tested and compatible with following liquids:

ChKM-Lösung	Adolf Haupt & Co. GmbH
Fokaldry	lege artis GmbH
Orthoskavident® C	Kettenbach GmbH & Co. KG
Tubulicid Red Label	Dental Therapeutics AB
Tubulicid Blue Label	Dental Therapeutics AB
Tubulicid Plus Endo	Dental Therapeutics AB
Cavidex	DETAX GmbH & Co. KG

Content: 1 Hy-Drop Forte + 5 membranes



**Please fax your order to: +41 91 946 32 03  
or e-mail to [sales@polydentia.com](mailto:sales@polydentia.com)**

Please deliver through my dealer:

.....

Address:

Item REF	Description	Q.ty
	Polydentia Product Catalogue <b>for free</b>	
	Flyer Clinical Cases <b>for free</b>	

REV 01 02 2015

